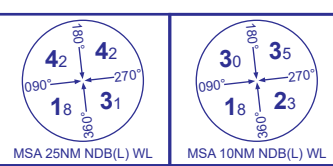
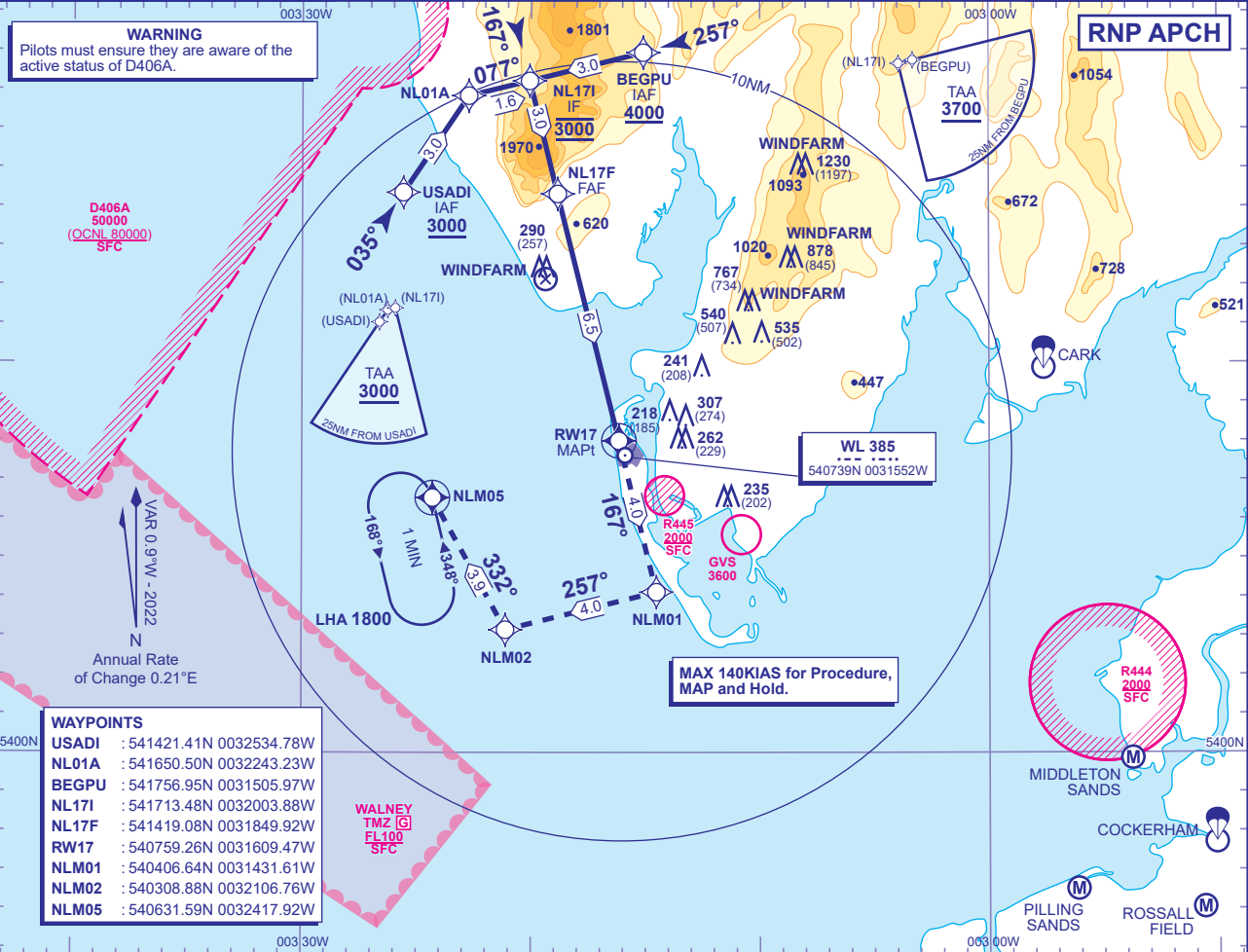


INSTRUMENT APPROACH CHART - ICAO

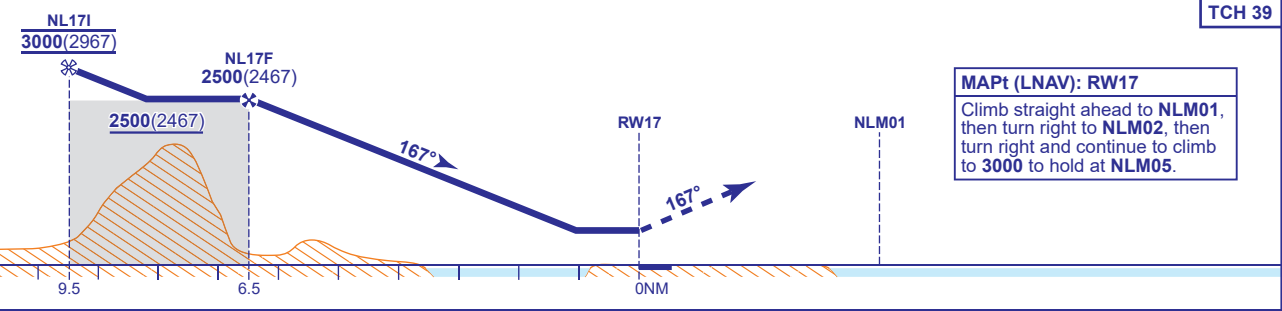
WALNEY  
RNP  
RWY 17  
(ACFT CAT A,B)



AFIS 118.080	WALNEY INFORMATION	AD ELEVATION 44	MIN TEMP -10°C
		THR ELEVATION 33	TRANSITION ALTITUDE 3000
		OBSTACLE ELEVATION 1230 AMSL (1197) (ABOVE THR)	
		BEARINGS ARE MAGNETIC	



RECOMMENDED PROFILE VNAV - VERTICAL PATH ANGLE 3.5° (LNAV 6.1% 372FT/NM)					
NM to RW17	6	5	4	3	2
ALT(HGT)	2310(2277)	1940(1907)	1560(1527)	1190(1157)	820(787)



Aircraft Category	A	B	Rate of descent	G/S KT	160	140	120	100	80
OCA (OCH)	LNAV	880(847)		FT/MIN	990	870	740	620	500
VM(C)OCA (OCH AAL)	Total Area	700(656)	700(656)						

NOTES 1 WARNING: High terrain in the intermediate segment. Do not descend below 2500 before reaching the FAF.  
2 Arrivals from the north route via BEGPU at 4200. Arrival via NL17I not available.  
3 Subsequent Approach after a MAP is only available via USADI.  
4 Use of this procedure is strictly PPR from the aerodrome operator.

CHANGE (1/25): NOTE 4 ADDED.

AERO INFO DATE 25 OCT 24

AD 2-ENGL-8-1